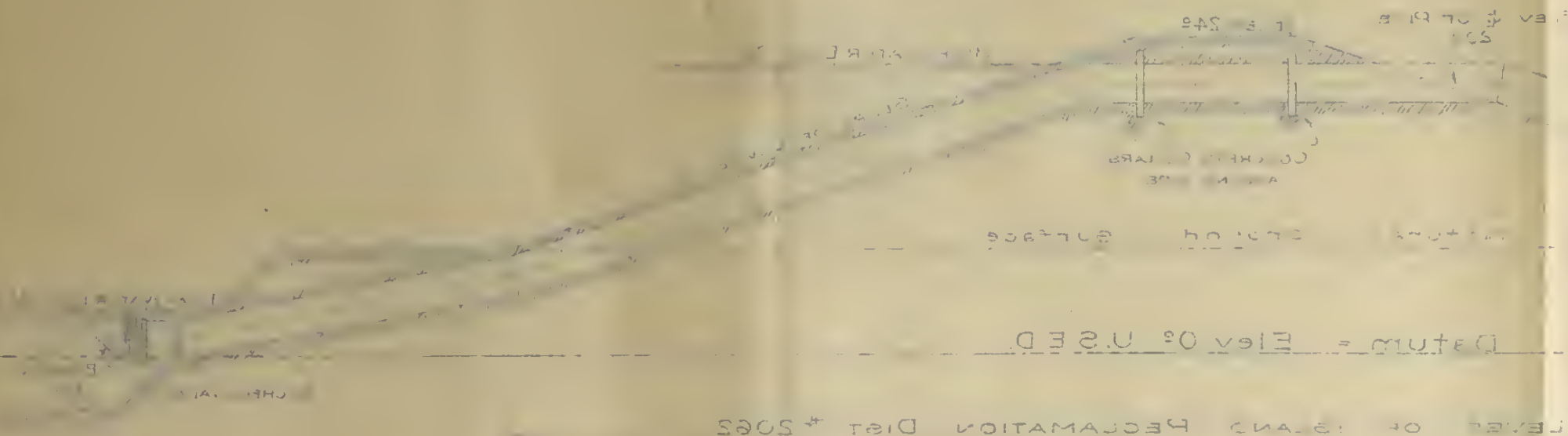
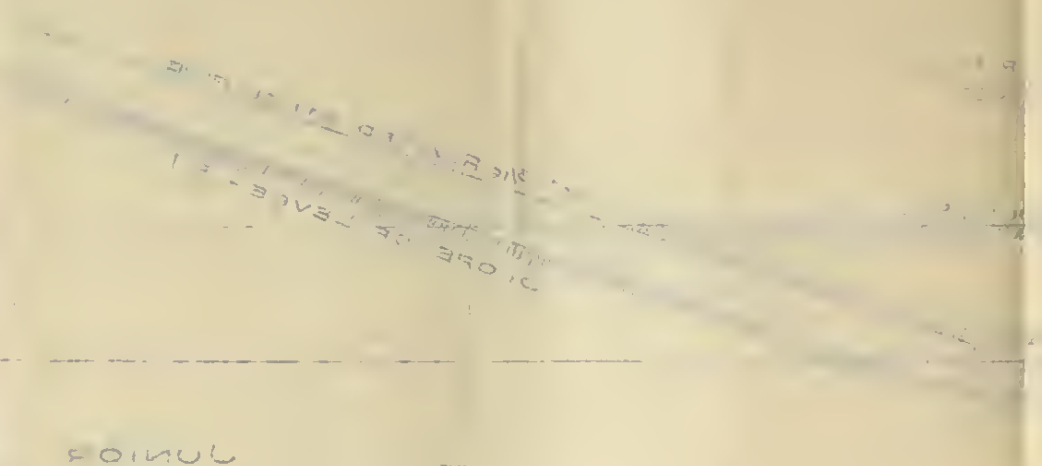
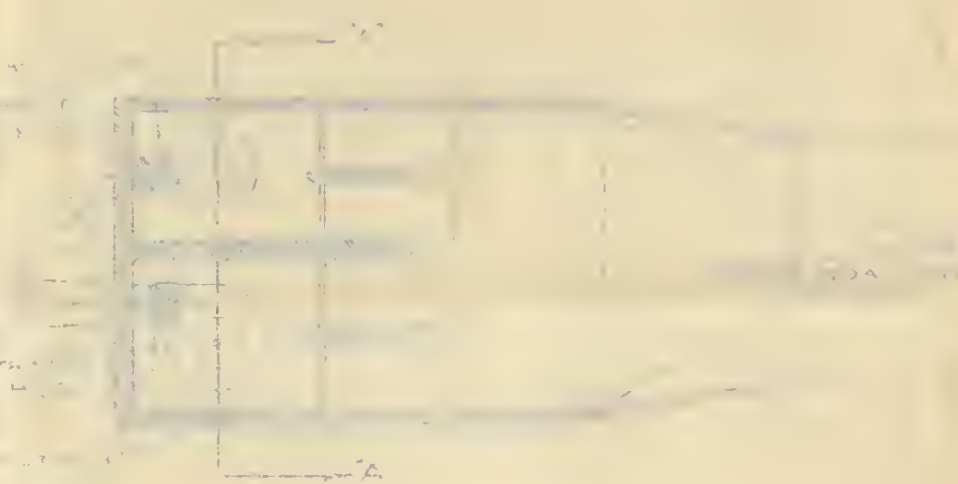


PROPOSED DRAINAGE PUMPING PLANT  
FOR  
ISLAND RECLAMATION DISTRICT N $^{\circ}$  2062  
A. O. STEWART, PRESIDENT  
LOCATED AT WESTERLY END OF DISTRICT  
ADJACENT TO PARADISE CUT  
SCALE 1" = 10'  
F.C. Herrmann } Cons. Engrs.  
T.W. Ransom }

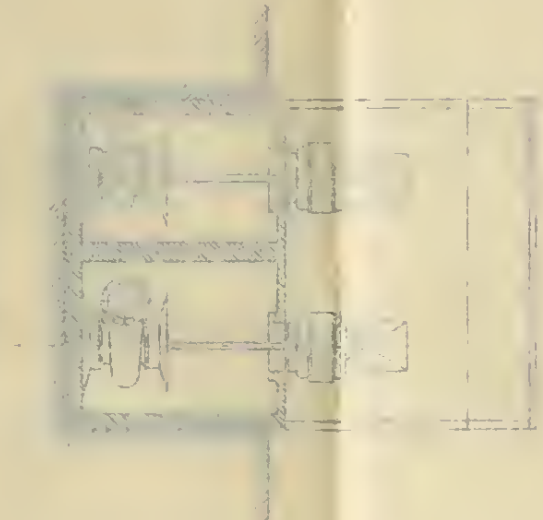


Datum = Elev 0<sup>o</sup> U.S.D.

JUNIOR LEVEL OF ISLAND RECLAMATION DIST # 5062



SECTION A-A



SECTION A-A

ISLAND RECLAMATION DISTRICT NO. 5062  
 PROJECTED DRAINAGE PLUMBING PLAN  
 LOCATED AT WESTERN END OF DISTRICT  
 A FACILITY TO PARALLEL ONE  
 SCALE 1" = 10'  
 SHEET C